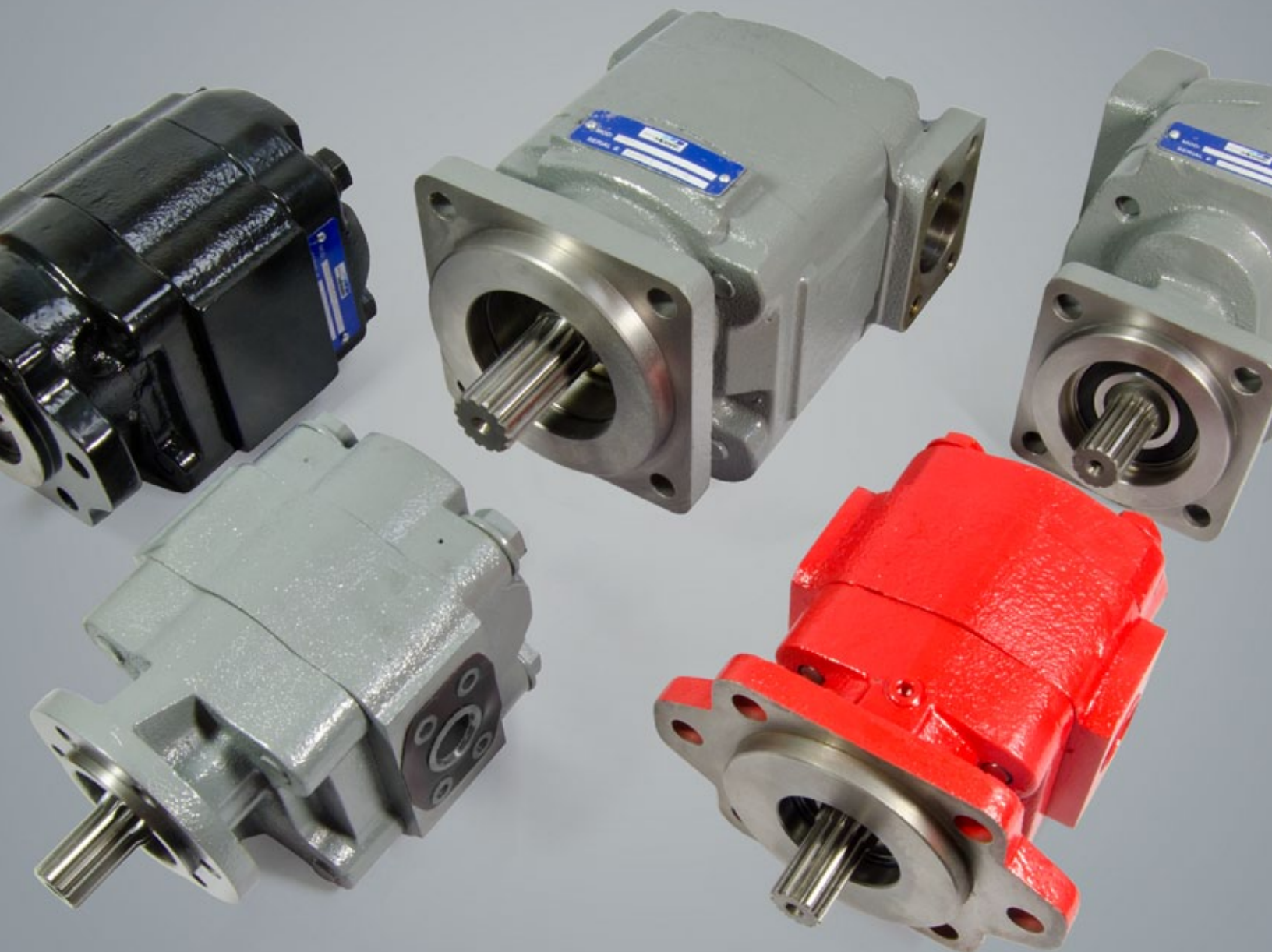


Genuine Metaris Gear Product Technical Catalog

Pumps & Components - MH Series Bearing & Bushing Style



MH20 Series Bearing Pump

Features

Metaris Bearing Pumps & Motors are available in 9 models with a variety of mounting flanges, shaft configurations and porting options. Multi-section units, piggyback designs, dowelled assemblies & flow dividers are all also available. With ductile iron housings, these pumps offer pressure ratings as high as 3000 psi for the most demanding of applications.

- Heavy Duty Roller Bearing Design
- Dowelled and Rugged Cast Iron Construction
- Pressure Balanced Wear Plates
- Working Pressure up to 3000 psi
- Multiple Bearing Carrier Options
- Multiple Porting Options
- High Strength Steel Gear & Shaft Sets



Specifications

MH20		DISPLACEMENT		MAX PRESSURE	
GEAR WIDTH		IN ³ /REV	(CM ³ /REV)	PSI	BAR
.05	1/2"	.99	(16.1)	3000	(207)
.07	3/4"	1.48	(24.2)	3000	(207)
1.00	1"	1.97	(32.3)	3000	(207)
1.25	1-1/4"	2.46	(40.4)	3000	(207)
1.50	1-1/2"	2.96	(48.4)	3000	(207)
1.75	1-3/4"	3.45	(56.5)	2500	(172)
2.00	2"	3.94	(64.6)	2500	(172)

MH20 Series Bearing Pump

Pump Performance Data

SPEED RPM	GEAR WIDTH (GPM/LPM)				
	1"	1-1/4"	1-1/2"	1-3/4"	2"
900	6.5 / 24.5	8 / 30	10 / 38	12 / 45.5	13.5 / 51
1200	9 / 34	11.5 / 43.5	14 / 53	16 / 60.5	18.5 / 70
1500	11.5 / 43.5	14.5 / 55	17.5 / 66	20.5 / 77.5	23.5 / 89
1800	14 / 53	18 / 68	21.5 / 81.5	25 / 94.5	29 / 110
2100	16.5 / 62.5	21 / 79.5	25 / 94.5	29.5 / 112	34 / 129
2400	19 / 72	24 / 91	29 / 110	34 / 129	39 / 148

Motor Performance Data

SPEED RPM	GEAR WIDTH					
	1"		1-1/2"		2"	
	INPUT FLOW (GPM/LPM)	OUTPUT TORQUE (IN/LBS / NM)	INPUT FLOW (GPM/LPM)	OUTPUT TORQUE (IN/LBS / NM)	INPUT FLOW (GPM/LPM)	OUTPUT TORQUE (IN/LBS / NM)
800	9 / 34	550 / 6.5	13 / 49	870 / 10	17 / 64.5	1150 / 13
1200	13 / 49	550 / 6.5	18 / 68	870 / 10	23.5 / 89	1150 / 13
1600	16 / 60.5	550 / 6.5	23 / 87	860 / 10	30.5 / 115	1140 / 13
2000	19.5 / 74	550 / 6.5	28 / 106	850 / 10	37 / 140	1125 / 13

Note: Input Flow @ 2000psi | Output Torque @ 140 bar

MH20 PL Chart

SHAFT STYLE	INTEGRAL	TWO PIECE
SAE "BB" Spline	13,000	5,500
SAE "BB" Keyed	8,600	5,500
SAE "B" Spline	8,300	5,500
SAE "B" Keyed	5,700	5,500
SAE "C" Spline	*	*
SAE "C" Keyed	*	*
Connecting Shaft		5,500

Values based on using anti-wear type petroleum oil 150 SUS at 100° F (ISO rating of 32 cSt at 38° C) and 0 psi inlet pressure.

MH20 Series Bearing Pump

Model Code Breakdown

Repeat for Tandem Units

1 2 3 4 5 6 7 8 9 6 7 10

MHP - 20 - A - 1 - 07 - WE - AB - 10 - 12 - DH - * - * - *

Type ¹

MHP = Pump
MHM = Motor

Unit ²

A = Single Unit
B = Tandem Unit
C = Single or Tandem Unit w/ a Continental Shaft

Shaft End Cover ³

1 = Pump w/o Shaft Bearing (Clockwise Rotation)
2 = Pump w/o Shaft Bearing (Counter-clockwise Rotation)
3 = Pump w/o Shaft Bearing (Double Rotation)
4 = Pump w/ Shaft Bearing (Clockwise Rotation)
5 = Pump w/ Shaft Bearing (Counter-clockwise Rotation)
6 = Pump w/ Shaft Bearing (Double Rotation)
8 = Motor w/ Shaft Bearing & 1/4" Drain Port
9 = Motor w/o Shaft Bearing & 1/4" Drain Port

Shaft End Cover ⁴

27 = 4-Bolt Cloverleaf Mount (Type 2) **94** = SAE 2-Bolt "A" Mount (Type 1)
42 = SAE 4-Bolt "B" Mount (Type 1) **96** = SAE 2-Bolt "B" Mount (Type 2)
46 = SAE 2/4-Bolt "B" Mount (Type 1) **97** = SAE 2-Bolt "B" Mount (Type 1)

Port End Cover ⁵

NPT Codes

Single Units	Tandem Units	Port Size		A	B
		Left	Right		
BE BY	BI BY	None	None	n/a	n/a
KE KY	KI KY	3/4"	None	n/a	1.4
LE LY	LI LY	None	3/4"	1.4	n/a
ME MY	MI MY	3/4"	3/4"	1.4	1.4
QU QQ	QO QQ	1"	1"	1.4	1.4
AI	AI	3/4"	1"	1.4	1.4
EI	EI	1"	3/4"	1.4	1.4

↑ ↑ ↑ ↑
With Support Studs
Without Support Studs
Orientation is viewed from the shaft end

ORB Codes

Single Units	Tandem Units	Port Size		A	B
		Left	Right		
CE CY	CI CY	3/4"	None	n/a	1.4
DE DY	DI DY	None	3/4"	1.4	n/a
FE FY	FI FY	3/4"	3/4"	1.4	1.4
GE GY	GI GY	1"	3/4"	1.4	1.4
HE HY	HI HY	3/4"	1"	1.4	1.4
JE JY	JI JY	1"	1"	1.4	1.4
MA YO	MU YO	1"	None	n/a	1.4
RA RO	SU RO	None	1"	1.4	n/a

↑ ↑ ↑ ↑
With Support Studs
Without Support Studs
Orientation is viewed from the shaft end

Connecting Shaft ¹⁰

For connecting tandem units
1 = Connecting Shaft - Multiple Units

Bearing Carriers ⁹

See page 29 for Bearing Carrier options

Shaft Type ⁸

07 = SAE "C" 14 Tooth Spline 1.250" Dia. (Cont. Only)
12 = Keyed Shaft .75" Dia. x 1.56 Key (Cont. Only)
15 = SAE "B" Keyed .875 Dia. w/ 5/8"-18 Thd (Cont. Only)
25 = SAE "B" 13 Tooth Spline .88" Dia.
30 = SAE "B" Keyed .88" Dia. 1/4" x 3/8" x 1" Key
43 = SAE "BB" Keyed 1" Dia. 1/4" x 3/8" x 1-1/4" Key
95 = SAE "A" 9 Tooth Spline .62" Dia.
65 = SAE "B" Spline Type 2
66 = SAE "B" Keyed Type 2
98 = SAE "BB" 15 Tooth Spline 1" Dia.

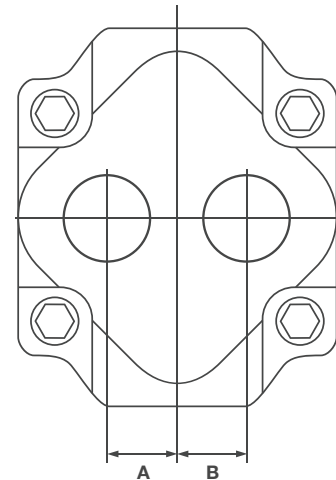
Gear Size ⁷

Code / Displacement (in³/r)

05 (.99)	07 (1.48)	10 (1.97)	12 (2.46)	15 (2.96)	17 (3.45)	20 (3.94)
-------------	--------------	--------------	--------------	--------------	--------------	--------------

Gear Housing ⁶

See following pages for Gear Housing options



MH20 Series Bearing Pump

Model Code Breakdown Cont.

Gear Housing ⁶

- Orientation is viewed from the shaft end
- NPT Porting is NOT RECOMMENDED for pressures above 1500 psi
- Ports marked with an 'x' are recommended porting - for all other porting please consult the factory
- Shaded Cells are good for Motor units

NPT Codes

Code	Port Size		5	7	10	12	15	17	20
	Left	Right							
AB	None	None	x	x	x	x	x	x	x
IL	1/2"	None	x	x	x				
IM	None	1/2"	x	x	x				
IR	1/2"	1/2"	x	x					
IC	3/4"	None		x	x	x	x	x	x
ID	None	3/4"		x	x	x	x	x	x
IF	3/4"	3/4"		x	x	x	x	x	x
IG	3/4"	1"			x	x	x	x	x
IH	3/4"	1-1/4"					x	x	
IJ	1"	3/4"			x	x	x	x	x
IK	1-1/4"	3/4"					x	x	
YC	1"	None			x	x	x	x	x
YD	None	1"			x	x	x	x	x
YF	1"	1"			x	x	x	x	x
YG	1"	1-1/4" *			x	x	x	x	x
YH	1"	1-1/2"					x	x	x
YJ	1-1/4" *	1"					x	x	x
YK	1-1/2"	1"					x	x	x
IA	1-1/4" *	None					x	x	x
IB	None	1-1/4" *					x	x	x
YL	1-1/4"	1-1/4"					x	x	x

BSPP Codes

Code	Port Size		5	7	10	12	15	17	20
	Left	Right							
AB	None	None	x	x	x	x	x	x	x
YN	3/4"	None		x	x	x	x	x	x
YQ	None	3/4"		x	x	x	x	x	x
YS	3/4"	3/4"			x	x		x	x
YT	3/4"	1"			x	x			
YU	3/4"	1-1/4"						x	x
YV	1"	3/4"			x	x	x	x	
YW	1-1/4"	3/4"						x	x
SL	1"	None				x	x	x	x
RQ	None	1"				x	x	x	x
MP	1"	1"				x	x	x	
VY	1"	1-1/4" *					x	x	x
IX	1-1/4" *	1"					x	x	x
NJ	1-1/4" *	None						x	x
UI	None	1-1/4" *						x	x
PF	1-1/4"	1-1/4"							x

Split Flange Codes

Code	Port Size		5	7	10	12	15	17	20
	Left	Right							
AB	None	None	x	x	x	x	x	x	x
UC	3/4"	None		x	x	x	x	x	x
UD	None	3/4"		x	x	x	x	x	x
UF	3/4"	1/2"		x	x	x	x	x	
UG	3/4"	1"			x	x	x	x	x
UH	3/4"	1-1/4"				x	x	x	x
UJ	1"	3/4"			x	x	x	x	x
UK	1-1/4"	3/4"				x	x	x	x
OC	1"	None				x	x	x	x
OD	None	1"				x	x	x	x
OF	1"	1"			x	x	x	x	x
OG	1"	1-1/4" *				x	x	x	x
OH	1"	1-1/2" *						x	x
OJ	1-1/4" *	1"				x	x	x	x
OK	1-1/2" *	1"						x	x
OA	1-1/4" *	None				x	x	x	x
OB	None	1-1/4" *				x	x	x	x
OL	1-1/4"	1-1/4"					x	x	x
OM	1-1/4"	1-1/2" *						x	x
OP	1-1/2" *	1-1/4"						x	x
OE	1-1/2" *	None						x	x
OU	None	1-1/2" *						x	x

MH20 Series Bearing Pump

Model Code Breakdown Cont.

Gear Housing Cont. ⁶

- Orientation is viewed from the shaft end
- NPT Porting is NOT RECOMMENDED for pressures above 1500 psi
- Ports marked with an 'x' are recommended porting - for all other porting please consult the factory
- Shaded Cells are good for Motor units

O.D. Tube Codes

Code	Port Size		5	7	10	12	15	17	20
	Left	Right							
AB	None	None	x	x	x	x	x	x	x
EC	3/4"	None		x	x	x	x	x	x
ED	None	3/4"		x	x	x	x	x	x
EF	3/4"	3/4"		x	x	x	x	x	x
EG	3/4"	1"			x	x	x	x	x
EH	3/4"	1-1/4"				x	x	x	x
IN	3/4"	1-1/2"						x	x
EJ	1"	3/4"			x	x	x	x	x
EK	1-1/4"	3/4"				x	x	x	x
IP	1-1/2"	3/4"						x	x
EZ	7/8"	None				x			
EL	7/8"	1"			x				
EM	1"	7/8"			x				
AC	1"	None			x	x	x	x	x
AD	None	1"			x	x	x	x	x
AF	1"	1"				x	x	x	x
AG	1"	1-1/4" *				x	x	x	x
AH	1"	1-1/2" *						x	x
AJ	1-1/4" *	1"				x	x	x	x
AK	1-1/2" *	1"						x	x
AA	1-1/4" *	None				x	x	x	x
AO	None	1-1/4" *				x	x	x	x
AL	1-1/4"	1-1/4"					x	x	x
AM	1-1/4"	1-1/2" *						x	x
AP	1-1/2" *	1-1/4"						x	x
AE	1-1/2" *	None						x	x
AU	None	1-1/2" *						x	x

* Low Pressure Inlet Porting

Metric S.F. Codes

Code	Port Size		5	7	10	12	15	17	20
	Left	Right							
AB	None	None	x	x	x	x	x	x	x
VN	3/4"	None			x	x	x	x	
VQ	None	3/4"			x	x	x	x	
VS	3/4"	3/4"			x	x	x	x	
VT	3/4"	1"			x	x	x	x	
RV	1"	3/4"			x	x	x	x	
RU	3/4"	1-1/4"				x	x	x	
RW	1-1/4"	3/4"				x	x	x	
UL	1"	None			x	x	x	x	x
UR	None	1"			x	x	x	x	x
UM	1"	1"				x	x	x	
VU	1"	1-1/4" *				x	x	x	x
UX	1-1/4" *	1"				x	x	x	x
HO	1"	1-1/2" *						x	x
VO	1-1/2" *	1"						x	x
NO	1-1/4" *	None					x	x	x
UO	None	1-1/4" *					x	x	x
PO	1-1/4"	1-1/4"					x	x	x
QO	1-1/4"	1-1/2" *						x	x
SO	1-1/2" *	1-1/4"						x	x
UY	1-1/2" *	None						x	x
TO	None	1-1/2" *						x	x

* Low Pressure Inlet Porting

Metric Str. Thd. Codes

Code	Port Size		5	7	10	12	15	17	20
	Left	Right							
AB	None	None	x	x	x	x	x	x	x
EN	3/4"	None			x	x	x		
TQ	None	3/4"			x	x	x		
ES	3/4"	3/4"			x	x			
ET	3/4"	1"			x	x			
EV	1"	3/4"			x	x	x	x	
NL	1"	None			x	x	x		
ER	None	1"			x	x	x	x	x
CM	1"	1"				x	x		
VE	1"	1-1/4" *					x	x	x
EX	1-1/4" *	1"					x	x	x
PA	1-1/4"	1-1/4"						x	x
QA	1-1/4"	1-1/2" *							x
SA	1-1/2" *	1-1/4"							x

* Low Pressure Inlet Porting

MH20 Series Bearing Pump

Model Code Breakdown Cont.

Bearing Carriers ⁹

NPT Codes

In	Out	CW (Left)	CCW (Right)
None None	None None	 C A	 D J
1" 1-1/4"	None None	 TB VB	 BT BV
1" 1-1/4" 1-1/4"	3/4" 3/4" 1"	 TX VX VZ	 XT XV ZV
1-1/4" 1-1/4" 1-1/2"	3/4" 1" 1"	 TJ VJ VK KW	 JT JV KV -
1"	3/4"	 ZX	 XZ
1"	3/4"	 ZS	 SZ

SAE O-ring Codes

In	Out	CW (Left)	CCW (Right)
1" 1-1/4" 1-1/2"	None None None	 CB DB FB	 BC BD BF
None 1" 1-1/4" 1-1/2" 1-1/4" 1-1/2"	3/4" 3/4" 3/4" 1" 1"	 CJ DJ FJ DK FK	 JP JC JD JF KD KF
1" 1-1/4" 1-1/2" 1-1/4" 1-1/2"	3/4" 3/4" 3/4" 1" 1"	 CR DR FR DS FS	 RC RD RF SD SF
1"	3/4"	 KJ	 JK
1"	3/4"	 KX	 XK

SAE Split Flange Codes

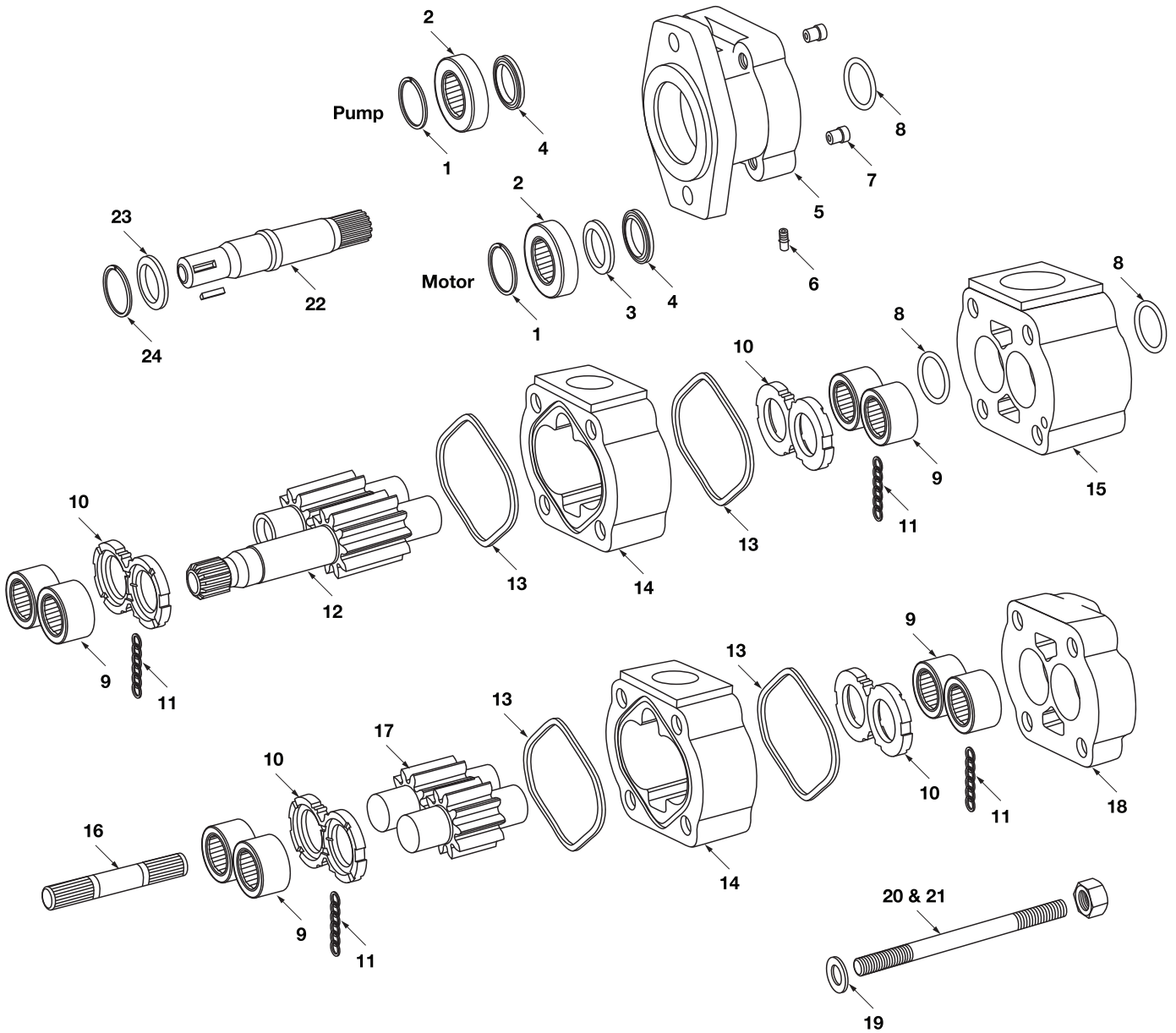
In	Out	CW (Left)	CCW (Right)
1" 1-1/4" 1-1/2"	None None None	 LB MB NB	 BL BM BN
None 1" 1-1/4" 1-1/2" 1-1/4" 1-1/2"	3/4" 3/4" 3/4" 3/4" 1" 1"	 BR LR MR NR MS NS	 RB RL RM RN SM SN
1" 1-1/4" 1-1/2" 1-1/4" 1-1/2"	3/4" 3/4" 3/4" 1" 1"	 LX MX NX MZ NZ	 XL XM XN ZM ZN
1"	3/4"	 SR	 RS
1"	3/4"	 RZ	 ZR

Motors Only Codes

In	Out	Dual	
None	None	 B	
1" 1-1/4" 1" 1-1/4" 1-1/2" 1" 1-1/4" 1-1/2"	1" 1-1/4" 1" 1-1/4" 1-1/2" 1" 1-1/4" 1-1/2"	 TT VV CC BB FF LL MM NN	NPT NPT SAE O-Ring SAE O-Ring SAE O-Ring SAE Split Flange SAE Split Flange SAE Split Flange

MH20 Series

Parts Breakdown



MH20 Series

Parts Breakdown

DRAWING NO.	DESCRIPTION	METARIS #	ALTERNATE #
1	SHAFT BEARING SNAP RING	X05-03-56200	391-2686-063
2a	BEARING SPACER (IN PLACE OF SHAFT BEARING)	A30-92-38520	391-3383-069
2b	INPUT SHAFT BEARING	X03-16-12552	391-0381-040
3	MOTOR SEAL RETAINER USED WITH SHAFT BEARING OR SPACER	A20-60-10000	391-3381-040
4a	PUMP LIP SEAL FOR CONTINENTAL SHAFT ONLY	X89-11-02508	391-2883-107
4b	MOTOR LIP SEAL FOR CONTINENTAL SHAFT ONLY	X84-36-02509	391-2883-126
4c	PUMP LIP SEAL FOR SHAFT END COVER	X83-11-02708	391-2883-058
4d	MOTOR LIP SEAL	X84-36-02709	391-2883-119
5a	20 6 BOLT ROUND WITH 2.625" OR 66.67 mm PILOT PUMP S.E.C. TYPE 05	A20-10-21650	308-5043-201
5b	20 PAD PILOT PUMP TYPE 2 S.E.C. TYPE 10	A20-10-22100	308-5016-203
5c	20 4 BOLT CLOVERLEAF PILOT TYPE 2 PUMP S.E.C. TYPE 27	A20-10-22460	308-5036-201
5d	20 4 BOLT B PILOT PUMP S.E.C. TYPE 42 (4" or 101.6 mm pilot)	A20-10-21420	308-5030-201
5e	20 2/4 BOLT B PILOT PUMP S.E.C. TYPE 46 (4" or 101.6 mm pilot)	A20-10-21320	308-5053-202
5f	20 2 BOLT A PILOT PUMP S.E.C. TYPE 94 (3 1/4" or 82.55 mm pilot)	A20-10-21210	308-5020-204
5g	20 2 BOLT B PILOT PUMP S.E.C. TYPE 97 (4" or 101.6 mm pilot)	A20-10-21220	308-5020-201
5h	20 2 BOLT B PILOT TYPE 2 PUMP S.E.C. TYPE 96 (4" or 101.6 mm pilot)	A20-10-22220	308-5029-205
5i	20 6 BOLT ROUND WITH 2.625" or 66.67 mm PILOT MOTOR S.E.C. TYPE 05	A20-10-41650	308-5043-401
5j	20 4 BOLT B PILOT MOTOR S.E.C. TYPE 42 (4" or 101.6 mm pilot)	A20-10-41420	308-5030-401
5k	20 2/4 BOLT B PILOT MOTOR S.E.C. TYPE 46 (4" or 101.6 mm pilot)	A20-10-41320	308-5053-402
5l	20 2 BOLT A PILOT MOTOR S.E.C. TYPE 94 (3 1/4" or 82.55 mm pilot)	A20-10-41210	308-5020-404
5m	20 2 BOLT B PILOT MOTOR S.E.C. TYPE 97 (4" or 101.6 mm pilot)	A20-10-41220	308-5020-401
6	CASE DRAIN PLUG	X02-03-22060	391-2282-056
7a	CHECK VALVE MOTOR	A00-75-11000	391-3681-001
7b	PRESSURE PLUG PUMP	X02-03-32110	391-2286-004
8	RING SEAL	X81-76-02706	391-2585-006
9	ROLLER BEARING (Ø 1.687" O.D.)	X03-24-12743	391-0381-068
10	PUMP & MOTOR THRUST PLATE	A30-70-10000	391-2185-013
11	POCKET SEAL	X85-11-00002	391-2882-086
12a	SHAFT & GEAR TYPE 30 (0.875" Ø x 1/4" x 3/8" x 1" key)	A30-50-XX125	312-29XX-730
12b	SHAFT & GEAR TYPE 25 (0.875" Ø - 13-Tooth spline)	A30-50-XX225	312-29XX-230
12c	SHAFT & GEAR TYPE 43 (1.00" Ø x 1/4" x 3/8" x 1 1/4" key)	A30-50-XX135	312-29XX-740
12d	SHAFT & GEAR TYPE 67 TYPE 2 (0.875" Ø x 1/4" x 3/8" x 1" key)	A30-50-XX132	312-29XX-940
12e	SHAFT & GEAR TYPE 66 TYPE 2 (0.875" Ø x 1/4" x 3/8" x 1" key)	A30-50-XX126	312-29XX-930
12f	SHAFT & GEAR TYPE 65 TYPE 2 (0.875" Ø - 13-Tooth spline)	A30-50-XX226	312-29XX-430
13	PUMP & MOTOR HOUSING GASKET	X85-11-09203	391-2884-019
14	PUMP & MOTOR GEAR HOUSING	A20-32-XX000	308-80XX-100
15a	20 MOTOR BEARING CARRIER BLANK	A20-40-00000	308-7300-100

MH20 Series

Parts Breakdown

DRAWING NO.	DESCRIPTION	METARIS #	ALTERNATE #
15b	20 PUMP BEARING CARRIER WITH COMMON PASSAGE	A20-40-20000	308-7363-100
16	CONNECTING SHAFT	A30-50-00500	312-1133-001
17	GEAR SET ONLY	A30-50-XX000	312-28XX-000
18	20 PUMP & MOTOR PORT END COVER	A20-22-00000	308-3100-100
19	FLAT WASHER (9/16")	X45-19-15005	391-3782-146
20	BOLTS / STUDS (9/16" UNC)	See Fasteners Page	
21	HEX NUT (9/16" UNC)	X42-11-14012	391-1451-115
22a	CONTINENTAL SHAFT TYPE 30 (0.875" Ø x 1/4" x 3/8" x 1" key)	A30-50-00121	312-1500-300
22b	CONTINENTAL SHAFT TYPE 30 (0.875" Ø x 1/4" x 3/8" x 1" key)	A30-50-00124	312-1135-192
22c	CONTINENTAL SHAFT TYPE 7 (1.250" Ø - 14-tooth spline, Continental only)	A30-50-00241	312-1135-133
22d	CONTINENTAL SHAFT TYPE 25 (0.875" Ø - 13-Tooth spline)	A30-50-00221	312-1135-138
22e	CONTINENTAL SHAFT TAPERED TYPE 32 (Clutch pump shaft with woodruff key)	Special Order	312-1500-001
22f	CONTINENTAL SHAFT TYPE 43 (1.00" Ø x 1/4" x 3/8" x 1 1/4" key)	A30-50-00131	312-1500-400
22g	CONTINENTAL SHAFT TYPE 43 Long (1.00" Ø x 1/4" x 3/8" x 1 1/4" key)	A30-50-00134	312-1135-193
22h	CONTINENTAL SHAFT TYPE 12 (0.750" Ø x 3/16" x 3/16" 1 9/16" key)	A30-50-00169	312-1135-152
22i	CONTINENTAL SHAFT THREADED & KEYED END TYPE 15 (5/8"-18UNF+1/4"x3/8"x7/8"key)	A30-50-00127	312-1135-171
22j	CONTINENTAL SHAFT TYPE 95 (0.625" Ø x 9-tooth spline)	A30-50-00211	312-1000-200
23	CONTINENTAL SHAFT BRG. RETAINER SNAP RING	X05-02-28110	391-2685-011
24	CONTINENTAL SHAFT BRG. RETAINER	A20-60-20000	312-0100-002
Not Shown	SHAFT KEY FOR TYPE 12 SHAFT	X01-02-50540	391-1781-075
Not Shown	SHAFT KEY FOR TYPE 43 & 67 SHAFT	X01-01-61032	391-1781-021
Not Shown	SHAFT KEY FOR TYPE 30 & 66 SHAFT	X01-01-61025	391-1781-025
Not Shown	SHAFT KEY FOR TYPE Spl. SHAFT	X01-01-61044	391-1781-020

Note: The **XX** shown in the part number is in place of the size - the true value must be placed into the part number when ordering parts.

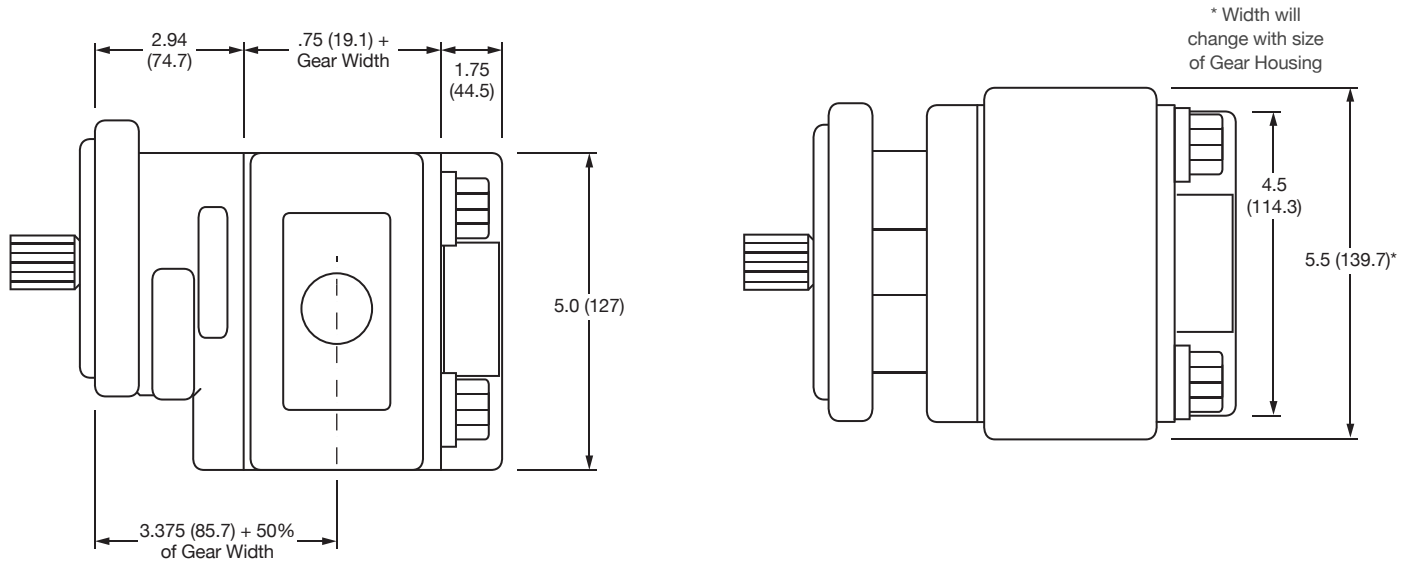
For example: Gear set no. A30-50-XX000 changes to A30-50-15000 for 1.5" gear size
 Housing no. A20-32-XX000 changes to A20-32-15000 for a 1.5" housing size
 No porting sizes have been indicated all porting must be specified when ordering parts.

MH20 Series

Dimensions

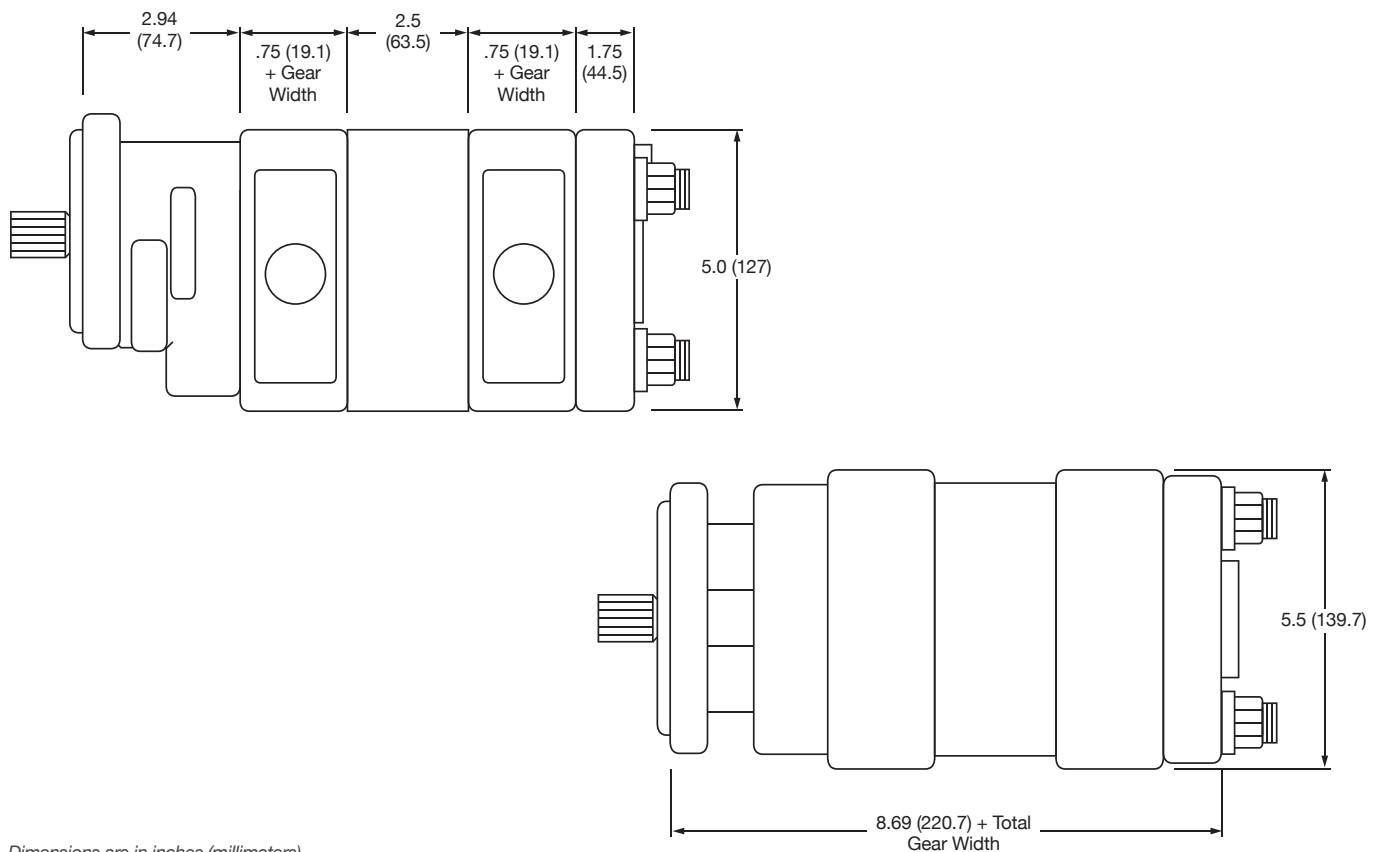
Single Unit

* Shaft dimension will change with the type of shaft used.



Multiple Unit

* Shaft dimension will change with the type of shaft used.



Dimensions are in inches (millimeters).