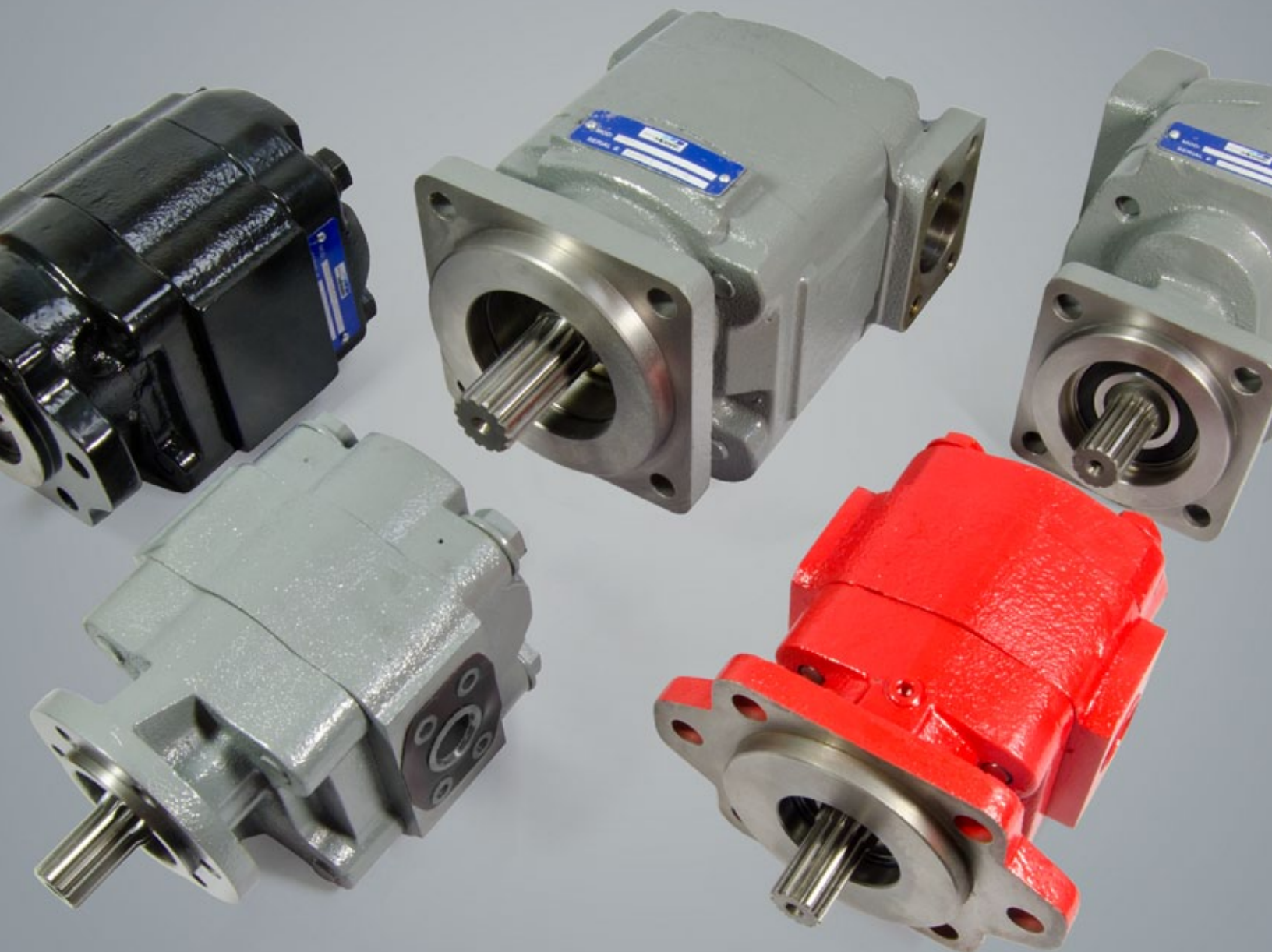


# Genuine Metaris Gear Product Technical Catalog

Pumps & Components - MH Series Bearing & Bushing Style



# MH365 Series Bushing Pump

## Features

Metaris Bushing Pumps & Motors are available in 4 models with many of the same available options as Metaris Bearing Pumps. With ductile iron housings, these pumps offer pressure ratings as high as 3500 psi for the most demanding of applications.

- Heavy Duty Sleeve Bushing Design
- Dowelled and Rugged Cast Iron Construction
- Pressure Balanced Wear Plates
- Working Pressure up to 3500 psi
- Multiple Bearing Carrier Options
- NPT & SAE Port Options
- High Strength Steel Gear & Shaft Sets



## Specifications

MH365		DISPLACEMENT		MAX PRESSURE	
GEAR WIDTH		IN <sup>3</sup> /REV	(CM <sup>3</sup> /REV)	PSI	BAR
.07	3/4"	2.70	(44.3)	3500	(241)
1.00	1"	3.60	(59.0)	3500	(241)
1.25	1-1/4"	4.50	(73.8)	3500	(241)
1.50	1-1/2"	5.40	(88.5)	3500	(241)
1.75	1-3/4"	6.30	(103.3)	3500	(241)
2.00	2"	7.20	(118.0)	3500	(241)
2.25	2-1/4"	8.10	(132.8)	3250	(224)
2.50	2-1/2"	9.00	(147.5)	3000	(207)

# MH365 Series Bushing Pump

## Pump Performance Data

SPEED RPM	GEAR WIDTH (GPM/LPM)							
	3/4"	1"	1-1/4"	1-1/2"	1-3/4"	2"	2-1/4"	2-1/2"
900	8 / 30	11.5 / 44	14.9 / 57	18.4 / 70	21.8 / 83	25.4 / 96	28.8 / 109	32.3 / 122
1200	11.5 / 44	16.2 / 61	20.8 / 79	25.5 / 96	30 / 114	34.7 / 131	39.3 / 149	44 / 166
1500	15 / 57	20.9 / 79	26.6 / 101	32.5 / 123	38.2 / 145	44.1 / 167	49.8 / 188	55.6 / 211
1800	18.5 / 70	25.6 / 97	32.5 / 123	39.5 / 149	46.4 / 176	53.4 / 202	60.3 / 228	67.3 / 255
2100	22 / 83	30.2 / 114	38.3 / 145	46.5 / 176	54.6 / 207	62.8 / 238	70.8 / 268	79 / 299
2400	25.6 / 97	34.9 / 132	44.2 / 167	53.5 / 203	62.8 / 238	72.1 / 273	81.4 / 308	90.7 / 343

## Motor Performance Data

SPEED RPM	GEAR WIDTH													
	1" (3500 PSI)		1-1/4" (3500 PSI)		1-1/2" (3500 PSI)		1-3/4" (3500 PSI)		2" (3500 PSI)		2-1/4" (3250 PSI)		2-1/2" (3000 PSI)	
	A	B	A	B	A	B	A	B	A	B	A	B	A	B
900	18.4 / 70	1865 / 210.7	22 / 83	2355 / 266.1	25.6 / 97	2860 / 323.1	29.2 / 111	3370 / 380.8	32.9 / 124	3850 / 435	36.5 / 138	4020 / 454.2	40.1 / 152	4125 / 466.1
1200	23.3 / 88	1845 / 208.5	28.1 / 106	2330 / 263.3	32.9 / 124	2830 / 319.7	37.6 / 142	3335 / 376.8	42.4 / 160	3800 / 430.5	47.2 / 179	3980 / 449.7	52 / 197	4080 / 461
1500	28.2 / 107	1815 / 205.1	34.1 / 129	2295 / 259.3	40.1 / 152	2780 / 314.1	46 / 74	3280 / 370.6	52 / 197	3750 / 423.7	57.9 / 219	3915 / 442.3	63.8 / 242	4020 / 454.2
1800	33.1 / 125	1805 / 203.9	40.2 / 152	2280 / 257.6	47.3 / 179	2765 / 312.4	54.4 / 206	3265 / 368.9	61.5 / 233	3730 / 421.4	68.6 / 260	3895 / 440.1	75.7 / 287	3995 / 451.4
2100	37.9 / 144	1755 / 198.3	46.2 / 175	2220 / 250.8	54.4 / 206	2690 / 303.9	62.8 / 238	3160 / 357	71.1 / 269	3610 / 407.9	79.3 / 300	3770 / 426	87.6 / 332	3865 / 436.7
2400	42.8 / 162	1705 / 192.6	52.3 / 198	2155 / 243.5	61.7 / 234	2615 / 295.5	51.2 / 269	3055 / 345.2	80.6 / 305	3490 / 394.3	90.1 / 341	3645 / 411.8	99.5 / 377	3740 / 422.6

**Note:** Input Flow @ 2500psi | Output Torque @ 175 bar

**A:** Input Flow - GPM / LPM

**B:** Output Torque - In/Lbs. / Nm

## MH365 PL Chart

SHAFT STYLE	INTEGRAL	TWO PIECE
SAE "BB" Spline	7,750	7,750
SAE "BB" Keyed	5,550	5,550
SAE "B" Spline	3,050	3,050
SAE "B" Keyed	3,700	3,700
SAE "C" Spline	14,900	11,950
SAE "C" Keyed	10,800	10,800
Connecting Shaft		11,950

Values based on using anti-wear type petroleum oil 150 SUS at 100° F (ISO rating of 32 cSt at 38° C) and 0 psi inlet pressure.

# MH365 Series Bushing Pump

## Model Code Breakdown

Repeat for Tandem Units

1      2   3   4      5      6      7      8      9   6   7   10  
**MHP - 365 - A - 1 - 78 - BL - AB - 10 - 11 - AU - \* - \* - \***

### Type <sup>1</sup>

**MHP** = Pump  
**MHM** = Motor

### Unit <sup>2</sup>

**A** = Single Unit  
**B** = Tandem Unit  
**C** = Single or Tandem Unit w/ a Continental Shaft  
**L** = Unit w/ Extended Studs

### Shaft End Cover <sup>3</sup>

**1** = Pump w/o Shaft Bearing (Clockwise Rotation)  
**2** = Pump w/o Shaft Bearing (Counter-clockwise Rotation)  
**4** = Pump w/ Shaft Bearing (Clockwise Rotation)  
**5** = Pump w/ Shaft Bearing (Counter-clockwise Rotation)  
**8** = Motor w/ Shaft Bearing (Bi-Rotational)  
**9** = Motor w/o Shaft Bearing (Bi-Rotational)

### Shaft End Cover <sup>4</sup>

**42** = SAE 4-Bolt "B" Mount  
**78** = SAE 4-Bolt "C" Mount  
**97** = SAE 2-Bolt "B" Mount  
**98** = SAE 2-Bolt "C" Mount

### Port End Cover <sup>5</sup>

#### Unported

		Port Size	
		In	Out
<b>BI</b>		None	None

#### Side Ported - SAE O-ring

		Port Size	
		In	Out
<b>FB</b>	<b>BF</b>	1-1/2"	1-1/4"
<b>FC</b>	<b>CF</b>	1-1/2"	1"
<b>FG</b>	<b>GF</b>	1-1/4"	1-1/4"
<b>FJ</b>	<b>JF</b>	1-1/4"	1"
<b>FL</b>	<b>LF</b>	1"	1"
<b>BC</b>	<b>CB</b>	1-1/2"	None
<b>BG</b>	<b>GB</b>	1-1/4"	None
<b>BJ</b>	<b>JB</b>	1"	None
<b>BL</b>	<b>LB</b>	None	1-1/4"
<b>BN</b>	<b>NB</b>	None	1"

Orientation is viewed from the shaft end

#### Motor - Side Ported - SAE O-ring

		Port Size	
		In	Out
<b>VC</b>		1-1/4"	1-1/4"
<b>VN</b>		1"	1"
<b>VR</b>		3/4"	3/4"

#### Side Ported - SAE Split Flange

		Port Size	
		In	Out
<b>EC</b>	<b>CE</b>	2"	1-1/2"
<b>EF</b>	<b>FE</b>	2"	1-1/4"
<b>EG</b>	<b>GE</b>	2"	1"
<b>EH</b>	<b>HE</b>	1-1/2"	1-1/2"
<b>EJ</b>	<b>JE</b>	1-1/2"	1-1/4"
<b>EK</b>	<b>KE</b>	1-1/2"	1"
<b>EL</b>	<b>LE</b>	1-1/4"	1-1/4"
<b>EM</b>	<b>ME</b>	1-1/4"	1"
<b>EN</b>	<b>NE</b>	1"	1"
<b>OE</b>	<b>EO</b>	2"	None
<b>OF</b>	<b>FO</b>	1-1/2"	None
<b>OG</b>	<b>GO</b>	1-1/4"	None
<b>OJ</b>	<b>JO</b>	1"	None
<b>OL</b>	<b>LO</b>	None	1-1/2"
<b>OM</b>	<b>MO</b>	None	1-1/4"
<b>ON</b>	<b>NO</b>	None	1"

Orientation is viewed from the shaft end

#### Motor - Side Ported - SAE Split Flange

		Port Size	
		In	Out
<b>CR</b>		1-1/2"	1-1/2"
<b>CS</b>		1-1/4"	1-1/4"
<b>CT</b>		1"	1"
<b>CV</b>		3/4"	3/4"

### Connecting Shaft <sup>10</sup>

For connecting tandem units  
**1** = Connecting Shaft - Multiple Units

### Bearing Carriers <sup>9</sup>

See following page for Bearing Carrier options

### Shaft Type <sup>8</sup>

**07** = SAE "C" 14 Tooth Spline 1.250 Dia.  
**11** = SAE "C" Keyed 1.249 Dia. 5/16" x 15/32" x 1-1/2" Key

### Gear Size <sup>7</sup>

Code / Displacement (in<sup>3</sup>/r)

<b>07</b> (2.70)	<b>10</b> (3.60)	<b>12</b> (4.50)	<b>15</b> (5.40)
<b>17</b> (6.30)	<b>20</b> (7.20)	<b>22</b> (8.10)	<b>25</b> (9.00)

### Gear Housing <sup>6</sup>

Code	Port Size		
	In	Out	
<b>AB</b>	None	None	Pump
<b>EB</b>	None	None	Motor

# MH365 Series Bushing Pump

## Model Code Breakdown Cont.

### Bearing Carriers <sup>9</sup>

#### Dual Outlet Pumps

##### SAE Split Flange

CW	CCW	Port Size		
		In	Out	Out
AC	CA	2-1/2"	1-1/2"	1-1/2"
AD	DA	2-1/2"	1-1/2"	1-1/4"
AE	EA	2-1/2"	1-1/2"	1"
AF	FA	2-1/2"	1-1/4"	1-1/4"
AG	GA	2-1/2"	1-1/4"	1"
AH	HA	2-1/2"	1"	1"
AM	MA	2"	1-1/4"	1-1/4"
AN	NA	2"	1-1/4"	1"
AP	PA	2"	1"	1"
AT	TA	1-1/2"	1-1/4"	1-1/4"
AU	UA	1-1/2"	1-1/4"	1"
AV	VA	1-1/2"	1"	1"
AW	WA	1-1/4"	1-1/4"	1-1/4"
AX	XA	1-1/4"	1-1/4"	1"
AY	YA	1-1/4"	1"	1"
AZ	ZA	1"	1"	1"

Orientation is viewed from the shaft end

#### Dual Outlet Pumps

##### SAE O-ring

CW	CCW	Port Size		
		In	Out	Out
GJ	JG	2"	1-1/2"	1-1/2"
GK	KG	2"	1-1/2"	1-1/4"
GL	LG	2"	1-1/2"	1"
GM	MG	2"	1-1/4"	1-1/4"
GN	NG	2"	1-1/4"	1"
GP	PG	2"	1"	1"
GT	TG	1-1/2"	1-1/4"	1-1/4"
GU	UG	1-1/2"	1-1/4"	1"
GV	VG	1-1/2"	1"	1"
GW	WG	1-1/4"	1-1/4"	1-1/4"
GX	XG	1-1/4"	1-1/4"	1"
GY	YG	1-1/4"	1"	1"
GZ	ZG	1"	1"	1"

Orientation is viewed from the shaft end

#### Single Outlet Pumps

##### SAE Split Flange

CW	CCW	Port Size	
		In	Out
CJ	JC	2-1/2"	1-1/2"
CL	LC	2-1/2"	1-1/4"
CM	MC	2-1/2"	1"
HB	BH	2"	1-1/2"
HC	CH	2"	1-1/4"
HF	FH	2"	1"
HL	LH	1-1/2"	1-1/2"
HM	MH	1-1/2"	1-1/4"
HN	NH	1-1/2"	1"
HO	OH	1-1/4"	1-1/4"
HP	PH	1-1/4"	1"
HQ	QH	1"	1"

Orientation is viewed from the shaft end

#### Single Outlet Pumps

##### SAE O-ring

CW	CCW	Port Size	
		In	Out
KB	BK	2"	1-1/2"
KC	CK	2"	1-1/4"
KF	FK	2"	1"
KL	LK	1-1/2"	1-1/2"
KM	MK	1-1/2"	1-1/4"
KN	NK	1-1/2"	1"
KO	OK	1-1/4"	1-1/4"
KP	PK	1-1/4"	1"
KQ	QK	1"	1"

Orientation is viewed from the shaft end

#### Combined Outlet Pumps

##### SAE Split Flange

CW	CCW	Port Size	
		In	Out
UC	CU	2-1/2"	1-1/2"
UF	FU	2-1/2"	1-1/4"
UN	NU	2"	1-1/2"
UO	OU	2"	1-1/4"
UP	PU	1-1/2"	1-1/2"
UQ	QU	1-1/2"	1-1/4"
UR	RU	1-1/4"	1-1/4"

Orientation is viewed from the shaft end

#### Combined Outlet Motors

##### SAE Split Flange

		Port Size	
		In	Out
AA		2"	2"
BB		1-1/2"	1-1/2"
CC		1-1/4"	1-1/4"
EE		1"	1"
FF		3/4"	3/4"

Orientation is viewed from the shaft end

#### Combined Outlet Pumps

##### SAE O-ring

CW	CCW	Port Size	
		In	Out
PE	EP	2"	1-1/2"
PM	MP	2"	1-1/4"
PN	NP	1-1/2"	1-1/2"
PQ	QP	1-1/2"	1-1/4"
PR	RP	1-1/4"	1-1/4"

Orientation is viewed from the shaft end

#### Combined Outlet Motors

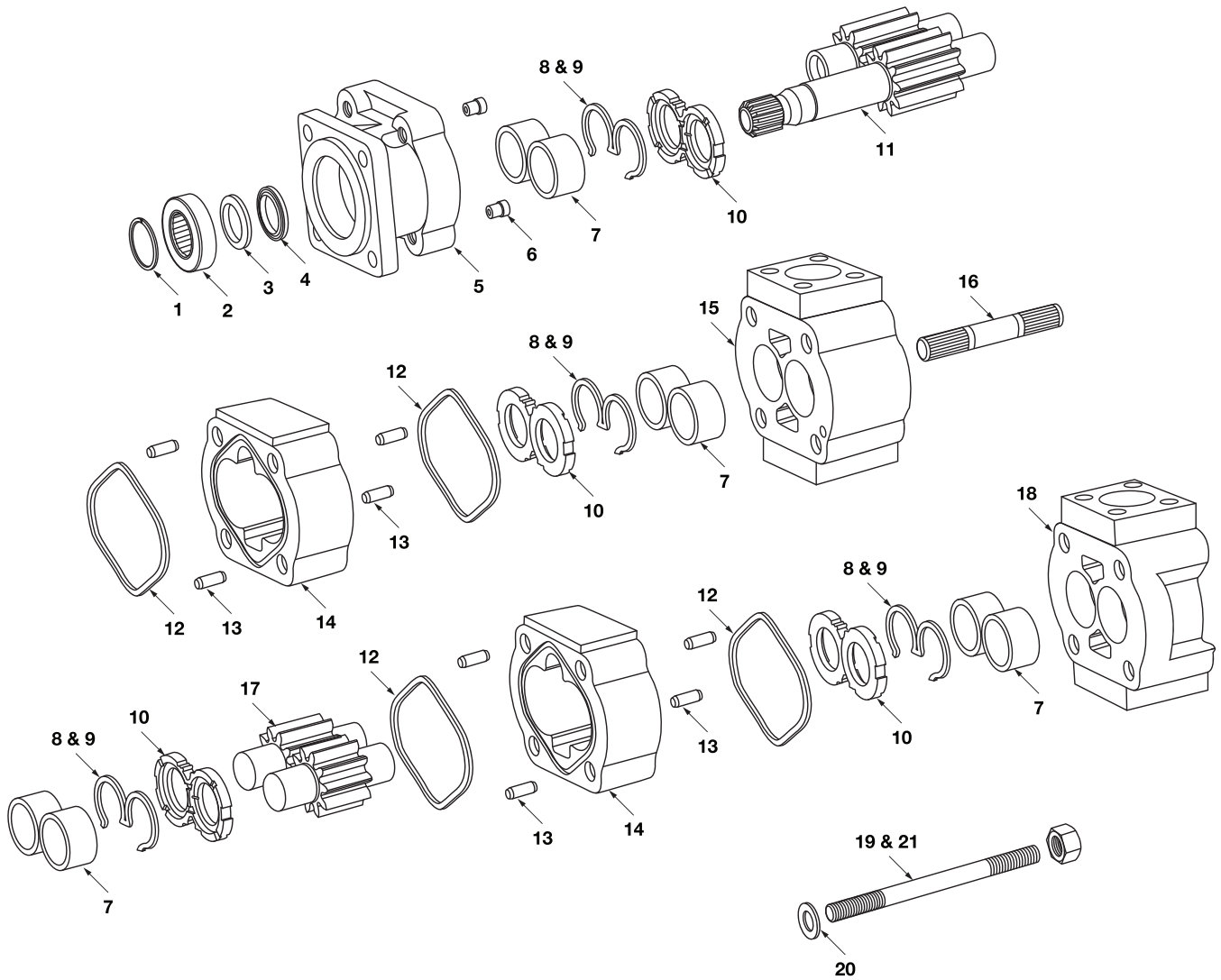
##### SAE O-ring

		Port Size	
		In	Out
MM		1-1/2"	1-1/2"
NN		1-1/4"	1-1/4"
QQ		1"	1"
RR		3/4"	3/4"

Orientation is viewed from the shaft end

# MH365 Series

## Parts Breakdown



# MH365 Series

## Parts Breakdown

DRAWING NO.	DESCRIPTION	METARIS #	ALTERNATE #
1	SHAFT BRG. SNAP RING	X05-01-88280	391-2686-025
2a	INPUT SHAFT BRG.	X03-16-13580	391-0381-078
2b	SEAL RETAINER & SPACER IN PLACE OF SHAFT BRG.	A36-60-10002	391-3383-099
3	SEAL RETAINER FOR MOTORS ONLY	A36-60-10001	391-2584-119
4a	PUMP LIP SEAL	X83-11-03508	391-2883-052
4b	MOTOR LIP SEAL	X84-36-03510	391-2883-094
5a	4 BOLT B MOUNT PUMP S.E.C. WITHOUT BUSHING TYPE 42 (4" or 101.6 mm pilot)	A36-10-21421	322-5033-201
5b	4 BOLT B MOUNT PUMP S.E.C. WITH BUSHING TYPE 42 (4" or 101.6 mm pilot)	A36-10-21422	322-5133-201
5c	4 BOLT C MOUNT PUMP S.E.C. WITHOUT BUSHING TYPE 78 (5" or 127 mm pilot)	A36-10-21431	322-5033-202
5d	4 BOLT C MOUNT PUMP S.E.C. WITH BUSHING TYPE 78 (5" or 127 mm pilot)	A36-10-21432	322-5133-202
5e	2 BOLT B MOUNT PUMP S.E.C. WITHOUT BUSHING TYPE 97 (4" or 101.6 mm pilot)	A36-10-21221	322-5023-201
5f	2 BOLT B MOUNT PUMP S.E.C. WITH BUSHING TYPE 97 (4" or 101.6 mm pilot)	A36-10-21222	322-5123-201
5g	2 BOLT C MOUNT PUMP S.E.C. WITHOUT BUSHING TYPE 98 (5" or 127 mm pilot)	A36-10-21231	322-5023-202
5h	2 BOLT C MOUNT PUMP S.E.C. WITH BUSHING TYPE 98 (5" or 127 mm pilot)	A36-10-21232	322-5123-202
5i	4 BOLT B MOUNT MOTOR S.E.C. WITHOUT BUSHING TYPE 42 (4" or 101.6 mm pilot)	A36-10-41421	322-5033-401
5j	4 BOLT B MOUNT MOTOR S.E.C. WITH BUSHING TYPE 42 (4" or 101.6 mm pilot)	A36-10-41422	322-5133-401
5k	4 BOLT C MOUNT MOTOR S.E.C. WITHOUT BUSHING TYPE 78 (5" or 127 mm pilot)	A36-10-41431	322-5033-402
5l	4 BOLT C MOUNT MOTOR S.E.C. WITH BUSHING TYPE 78 (5" or 127 mm pilot)	A36-10-41432	322-5133-402
5m	2 BOLT B MOUNT MOTOR S.E.C. WITHOUT BUSHING TYPE 97 (4" or 101.6 mm pilot)	A36-10-41221	322-5023-401
5n	2 BOLT B MOUNT MOTOR S.E.C. WITH BUSHING TYPE 97 (4" or 101.6 mm pilot)	A36-10-41222	322-5123-401
5o	2 BOLT C MOUNT MOTOR S.E.C. WITHOUT BUSHING TYPE 98 (5" or 127 mm pilot)	A36-10-41231	322-5023-402
5p	2 BOLT C MOUNT MOTOR S.E.C. WITH BUSHING TYPE 98 (5" or 127 mm pilot)	A36-10-41232	322-5123-402
6a	CHECK VALVE MOTOR ( Not required on all models )	A00-75-11000	391-3681-001
6b	PRESSURE PLUG PUMP ( Not required on all models )	X02-03-32110	391-2286-004
7	BUSHING	X03-00-33842	391-0482-307
8	PUMP BUNA SEAL	A36-82-13050	391-2883-176
9	PUMP NYLON BACKUP SEAL	A36-82-46020	391-2883-177
Not Shown	MOTOR NYLON BACKUP SEAL	A36-82-46030	391-2885-071
Not Shown	MOTOR THRUST PLATE SIDE SEAL	A36-82-14021	391-2885-069
Not Shown	MOTOR THRUST PLATE END SEAL	A36-82-14022	391-2885-070
10a	PUMP THRUST PLATE	A36-70-20000	391-2185-055
10b	MOTOR THRUST PLATE	A36-70-10000	391-2185-060
11a	SHAFT & GEAR 14 TOOTH SPLINE 1.228" maj. dia. TYPE 7	A36-50-XX245	322-29XX-250
11b	SHAFT & GEAR 1.250" KEYED (5/16") TYPE 11	A36-50-XX145	322-29XX-750
11c	SHAFT & GEAR SET 13 TOOTH SPLINE 0.858" maj. dia TYPE 25	A36-50-XX225	322-29XX-230
12a	PUMP HOUSING GASKET	X85-11-12703	391-2884-052
12b	MOTOR HOUSING GASKET	X85-11-12303	391-2884-023

# MH365 Series

## Parts Breakdown

DRAWING NO.	DESCRIPTION	METARIS #	ALTERNATE #
13a	PUMP HOUSING DOWEL PIN	A00-94-22119	391-2082-062
13b	MOTOR HOUSING DOWEL PIN	A00-94-22408	391-2082-069
14a	PUMP GEAR HOUSING	A36-33-XX000	322-81XX-100
14b	MOTOR GEAR HOUSING	A36-32-XX000	322-82XX-100
15a	365 BEARING CARRIER 1 OUTLET WITHOUT BUSHING	A36-40-21000	322-7100-100
15b	365 BEARING CARRIER 1 OUTLET WITH BUSHING	A36-40-31000	322-7600-100
15c	365 BEARING CARRIER 2 OUTLET WITHOUT BUSHING	A36-40-22000	322-7300-100
15d	365 BEARING CARRIER 2 OUTLET WITH BUSHING	A36-40-32000	322-7800-100
15e	365 MOTOR BEARING CARRIER BLANK WITHOUT BUSHING	A36-40-00000	322-7200-100
15f	365 MOTOR BEARING CARRIER BLANK WITH BUSHING	A36-40-10000	322-7700-100
15g	365/330 BEARING CARRIER CW WITHOUT BUSHING	A36-40-23000	322-3050-100
15h	365/330 BEARING CARRIER CW WITH BUSHING	A36-40-33000	322-3150-100
15i	365/330 BEARING CARRIER CCW WITHOUT BUSHING	A36-40-24000	322-3060-100
15j	365/330 BEARING CARRIER CCW WITH BUSHING	A36-40-34000	322-3160-100
16a	CONNECTING SHAFT	A36-50-00500	322-1133-001
16b	PIGGYBACK CONNECTING SHAFT 365/330	A83-50-00500	322-1133-002
17	GEAR SET ONLY	A36-50-XX000	322-28XX-000
18a	365 PUMP PORT END COVER WITHOUT BUSHING NO PORTING	A36-23-00000	322-3000-100
18b	365 PUMP PORT END COVER WITH BUSHING NO PORTING	A36-23-10000	322-3100-100
18c	365 PUMP PORT END COVER WITHOUT BUSHING PORTING TYPE	A36-23-02000	322-3010-100
18d	365 PUMP PORT END COVER WITH BUSHING PORTING TYPE	A36-23-12000	322-3110-100
18e	365 MOTOR PORT END COVER WITHOUT BUSHING NO PORTING	A36-22-00000	322-3000-099
18f	365 MOTOR PORT END COVER WITH BUSHING NO PORTING	A36-22-10000	322-3100-099
18g	365 MOTOR PORT END COVER WITHOUT BUSHING PORTING TYPE	A36-22-02000	322-3020-100
18h	365 MOTOR PORT END COVER WITH BUSHING PORTING TYPE	A36-22-12000	322-3120-100
18i	365 P.E.C. TO S.A.E. "A" PILOT CW WITHOUT BUSHING	A36-22-04000	322-3054-099
18j	365 P.E.C. TO S.A.E. "A" PILOT CW WITH BUSHING	A36-23-14000	322-3154-099
18k	365 P.E.C. TO S.A.E. "A" PILOT CCW WITHOUT BUSHING	A36-22-05000	322-3064-099
18l	365 P.E.C. TO S.A.E. "A" PILOT CCW WITH BUSHING	A36-23-17000	322-3164-099
18m	365 P.E.C. TO S.A.E. "B" PILOT CW WITHOUT BUSHING	A36-23-06000	322-3054-100
18n	365 P.E.C. TO S.A.E. "B" PILOT CW WITH BUSHING	A36-23-16000	322-3154-100
18o	365 P.E.C. TO S.A.E. "B" PILOT CCW WITHOUT BUSHING	A36-23-07000	322-3064-100

**Note:** The **XX** shown in the part number is in place of the size - the true value must be placed into the part number when ordering parts.

For example: Gear set no. A36-50-XX000 changes to A36-50-15000 for 1.5" gear size  
Housing no. A36-33-XX000 changes to A36-33-15000 for a 1.5" housing size  
No porting sizes have been indicated all porting must be specified when ordering parts.



# MH365 Series

## Parts Breakdown

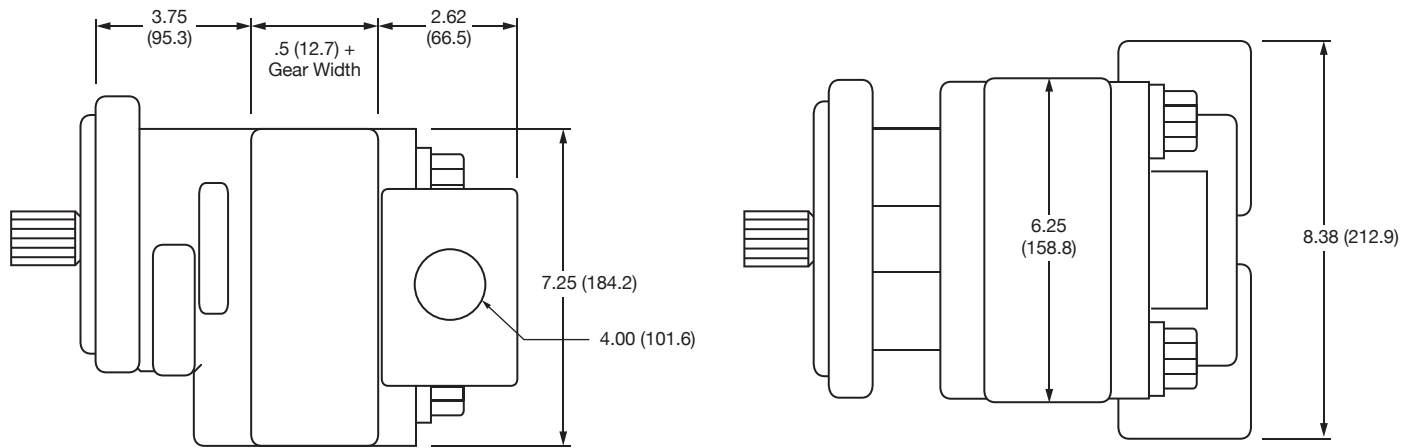
DRAWING NO.	DESCRIPTION	METARIS #	ALTERNATE #
18p	365 P.E.C. TO S.A.E. "B" PILOT CCW WITH BUSHING	A36-23-17000	322-3164-100
19	BOLTS / STUDS	See Fasteners Page	
20a	MOTOR FLAT WASHER	X45-10-21004	391-3782-114
20b	PUMP FLAT WASHER	X45-10-17005	391-3784-028
21a	PUMP HEX NUT	X42-11-16000	391-1451-076
21b	MOTOR HEX NUT	X42-11-19016	391-1451-086
Not Shown	CONTINENTAL SHAFT 1.250" KEYED (5/16") TYPE 11	A36-50-00141	322-1500-500
Not Shown	CONTINENTAL SHAFT 14 TOOTH SPLINE 1.228" maj. dia. TYPE 7	A36-50-00241	322-1000-500
Not Shown	CONTINENTAL SHAFT BRG. RETAINER	X45-19-35002	391-3782-158
Not Shown	CONTINENTAL SHAFT BRG. RETAINER SNAP RING	X05-02-38130	391-2685-029
Not Shown	SHAFT KEY FOR TYPE 11 SHAFT	X01-02-80838	391-1781-083
Not Shown	PIGGYBACK CONNECTING SHAFT BEARING	X03-16-13055	391-0381-099
Not Shown	PIGGYBACK CONNECTING SHAFT LIP SEAL	X83-11-03308	391-2883-103
Not Shown	PIGGYBACK CONNECTING SHAFT BEARING SNAP RING	X05-01-61200	391-2686-019
Not Shown	1/4" ORB DRAIN PLUG	X02-03-12060	391-2281-010

# MH365 Series

## Dimensions

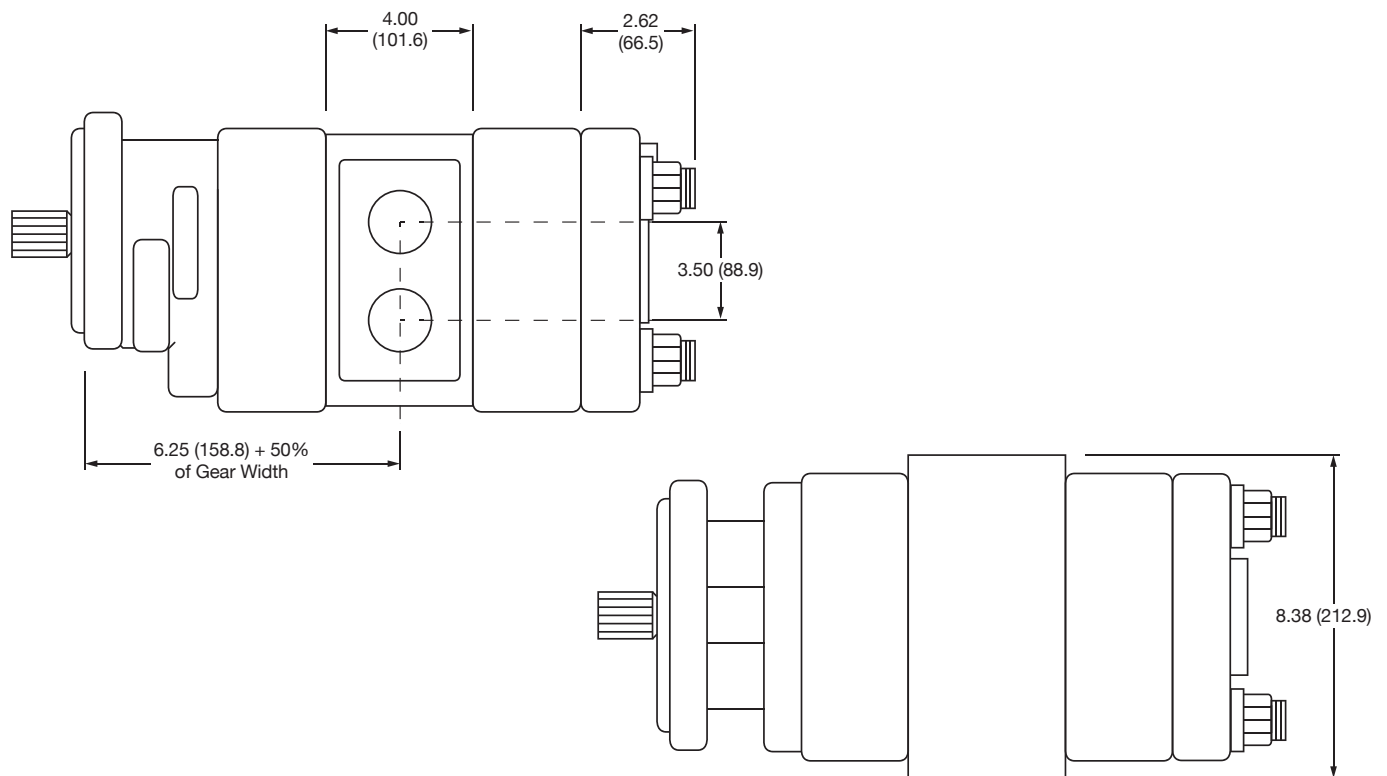
### Single Unit

\* Shaft dimension will change with the type of shaft used.



### Multiple Unit

\* Shaft dimension will change with the type of shaft used.



Dimensions are in inches (millimeters).