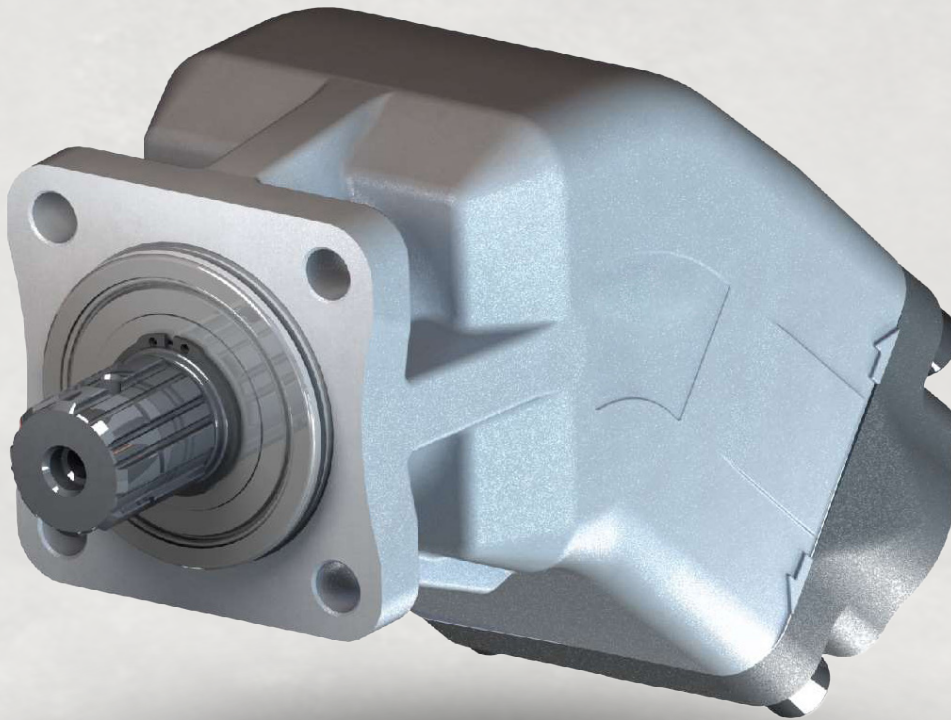
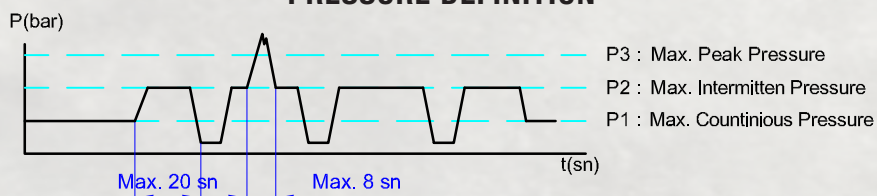




ALUMINUM BENT-AXIS PISTON PUMP



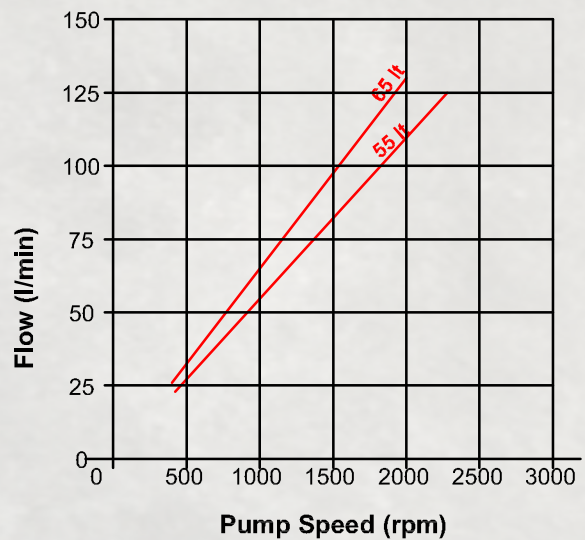
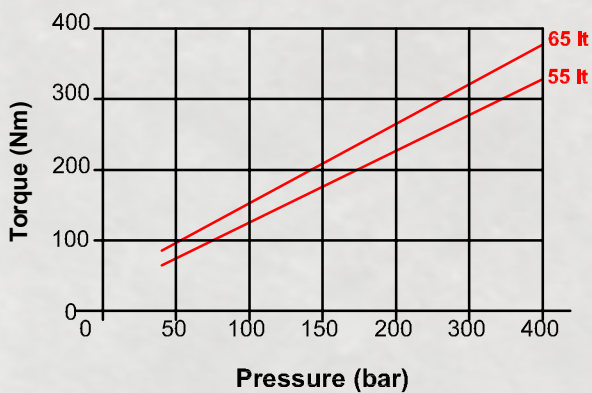
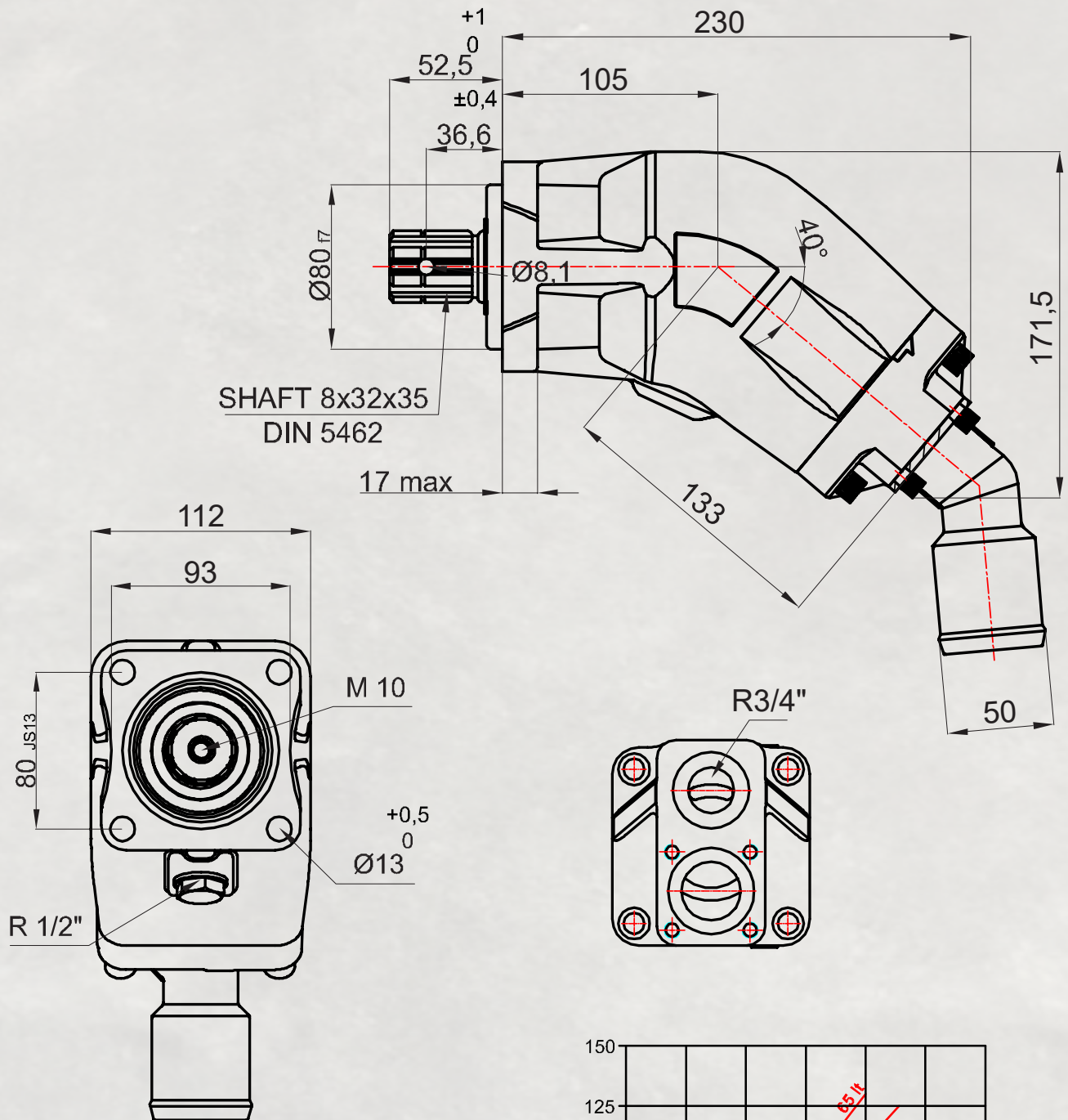
PRESSURE DEFINITION



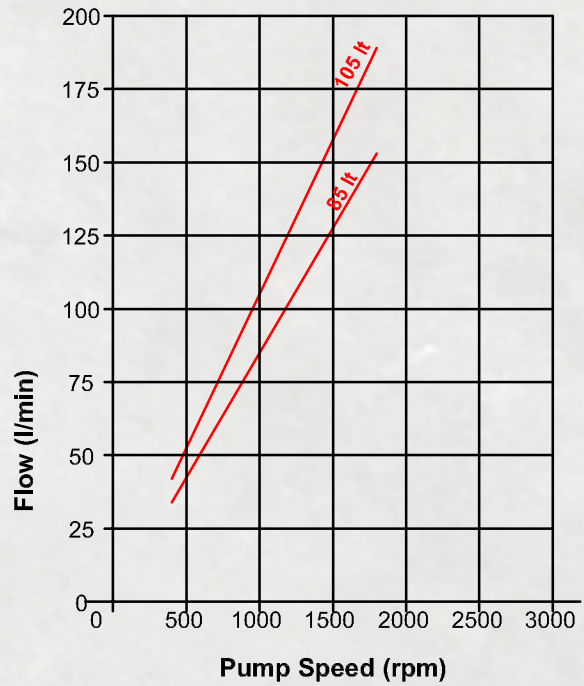
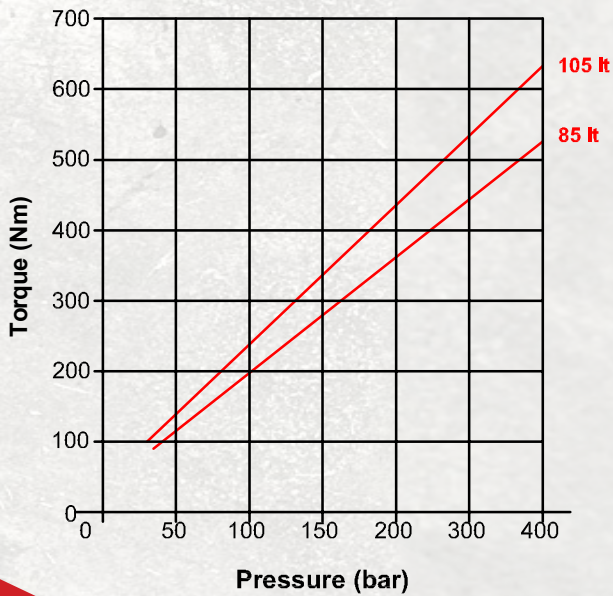
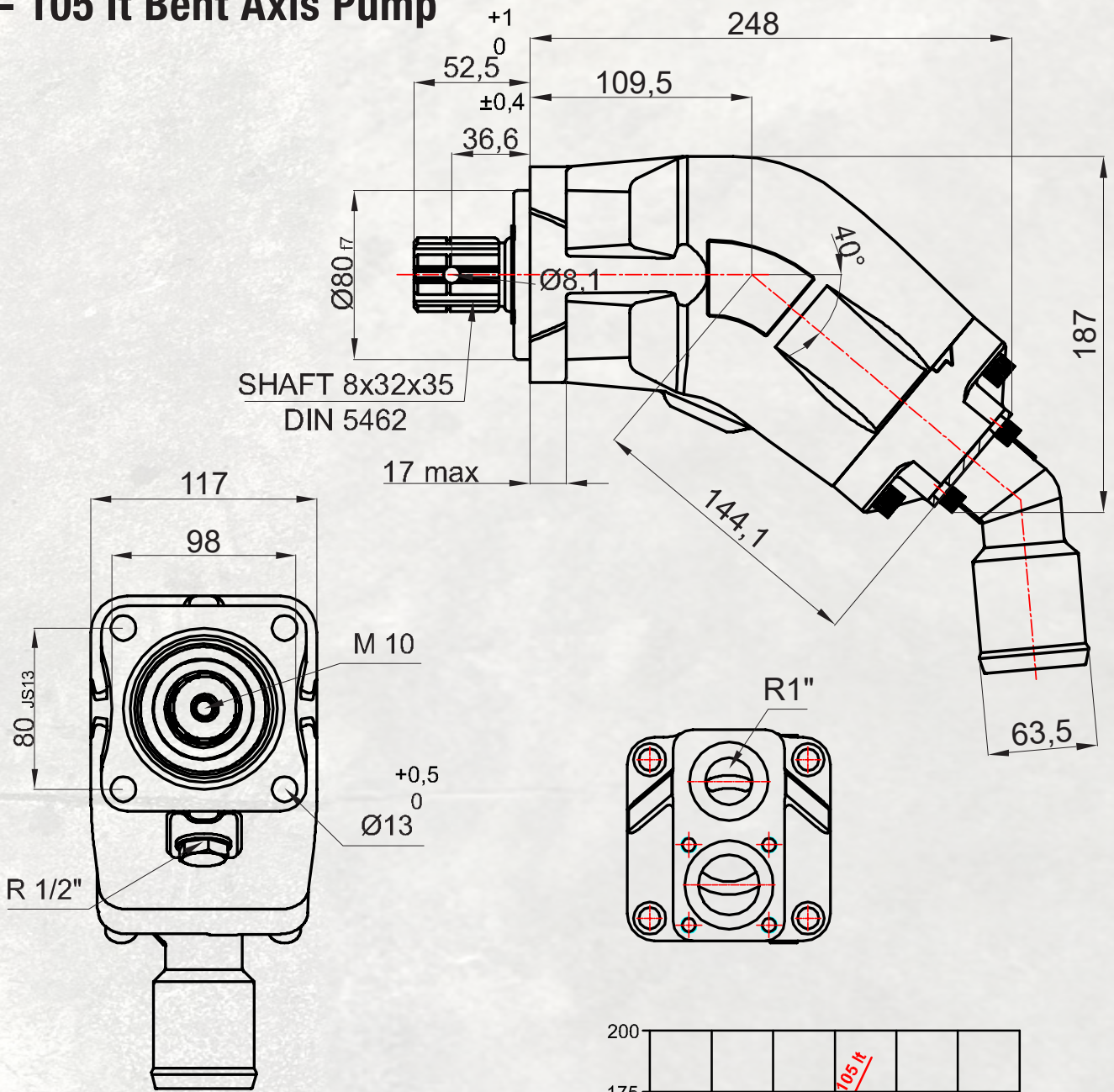
Pump Type	Code	Displacement	Max. Speed at Continuous Press.	Max. Speed at Intermittent Press. (nmax)	Min. Speed at Intermittent Press.	Max. Continuous Pressure (P3)	Max. Intermittent Pressure (P2)	Max. Peak Pressure (P1)
35 lt	KH03070350142L/R-1A	35	2200	2800	300	400	430	450
45 lt	KH03070450142L/R-1A	45	2100	2500	300	400	430	450
55 lt	KH03070550142L/R-1A	55	2000	2400	300	400	430	450
65 lt	KH03070650142L/R-1A	65	2000	2400	300	400	430	450
85 lt	KH03070850142L/R-1A	85	1800	2200	300	375	400	430
105 lt	KH03071050142L/R-1A	105	1700	2100	300	350	380	400
115 lt	KH03071150142L/R-1A	115	1500	2000	300	250	270	300



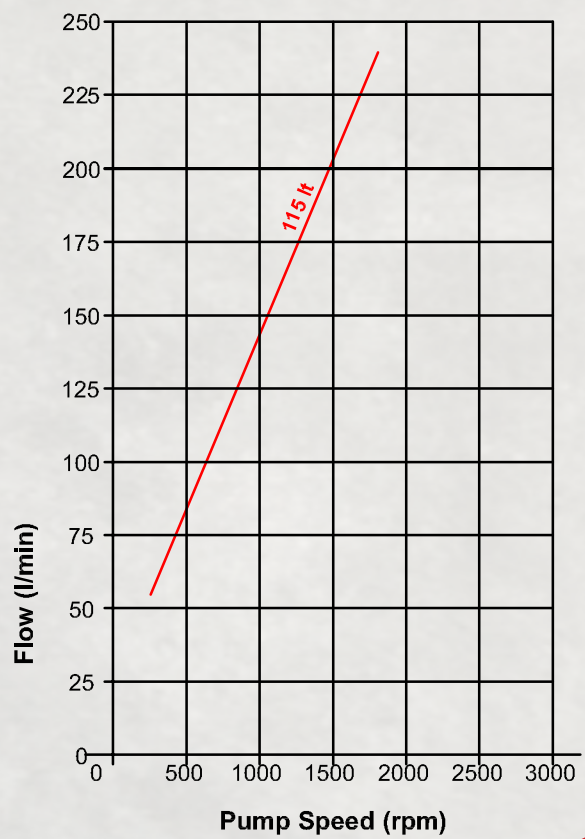
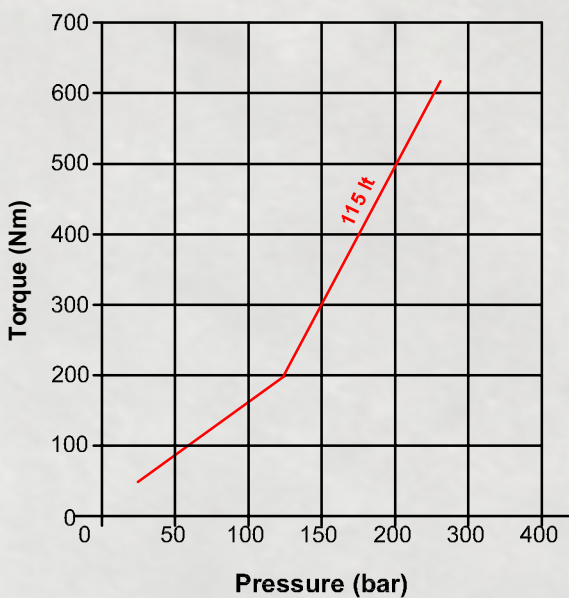
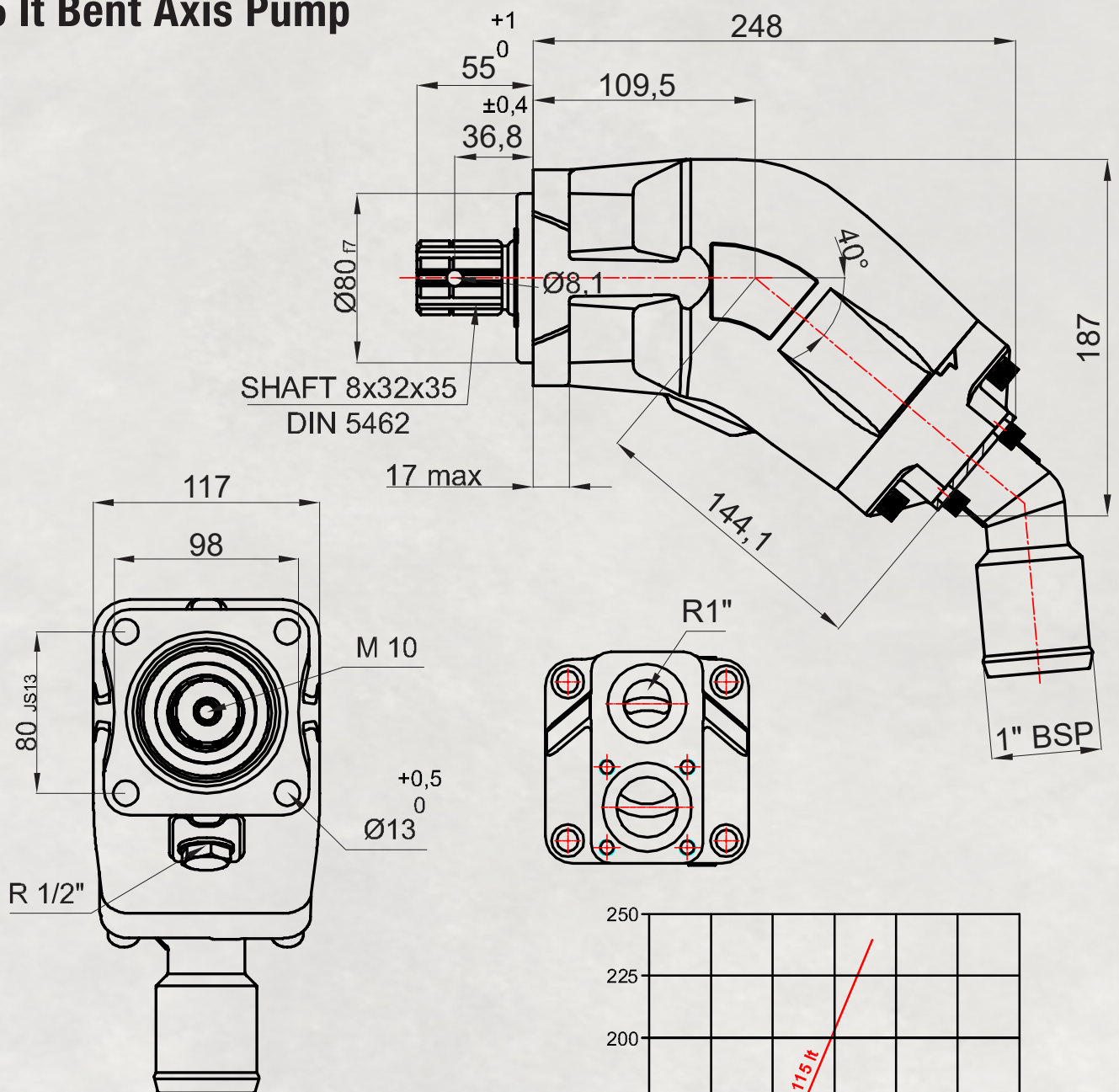
55 - 65 lt Bent Axis Pump



85 - 105 lt Bent Axis Pump

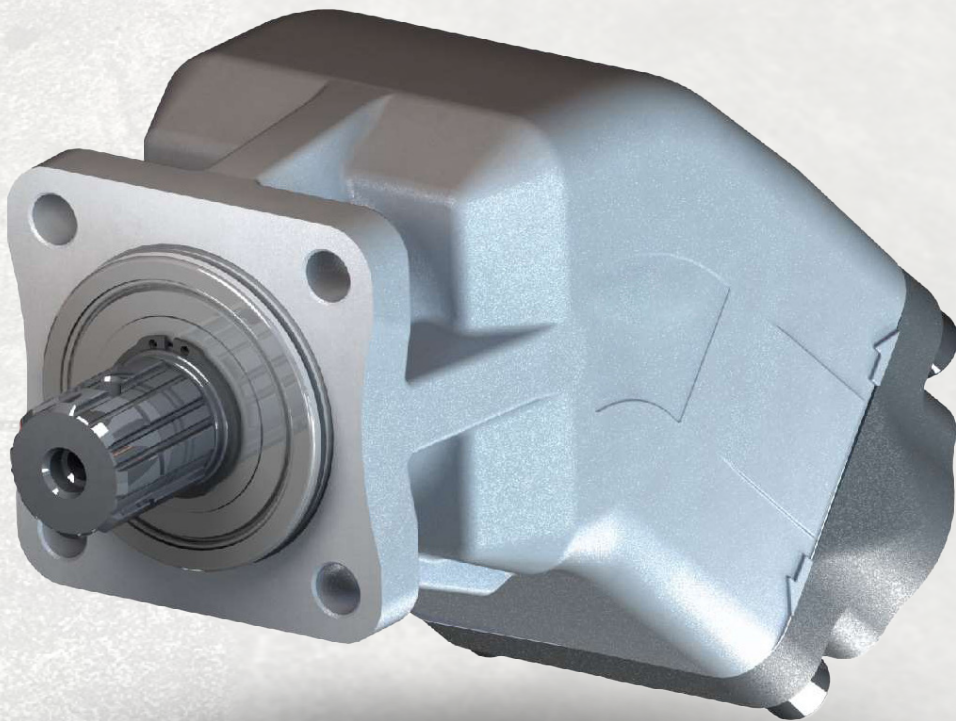


115 lt Bent Axis Pump





ALUMINUM BENT-AXIS PISTON PUMP



🌐 www.toracompany.com
🌐 www.kmspowertakeoff.com
✉ info@toracompany.com
📍 11417 IL 19, Franklin Park, IL 60131
☎ (630) 785-2410
📞 (331) 688-4947



[toracompany](https://www.facebook.com/toracompany)



[tora.company](https://www.instagram.com/tora.company)



www.toracompany.com

